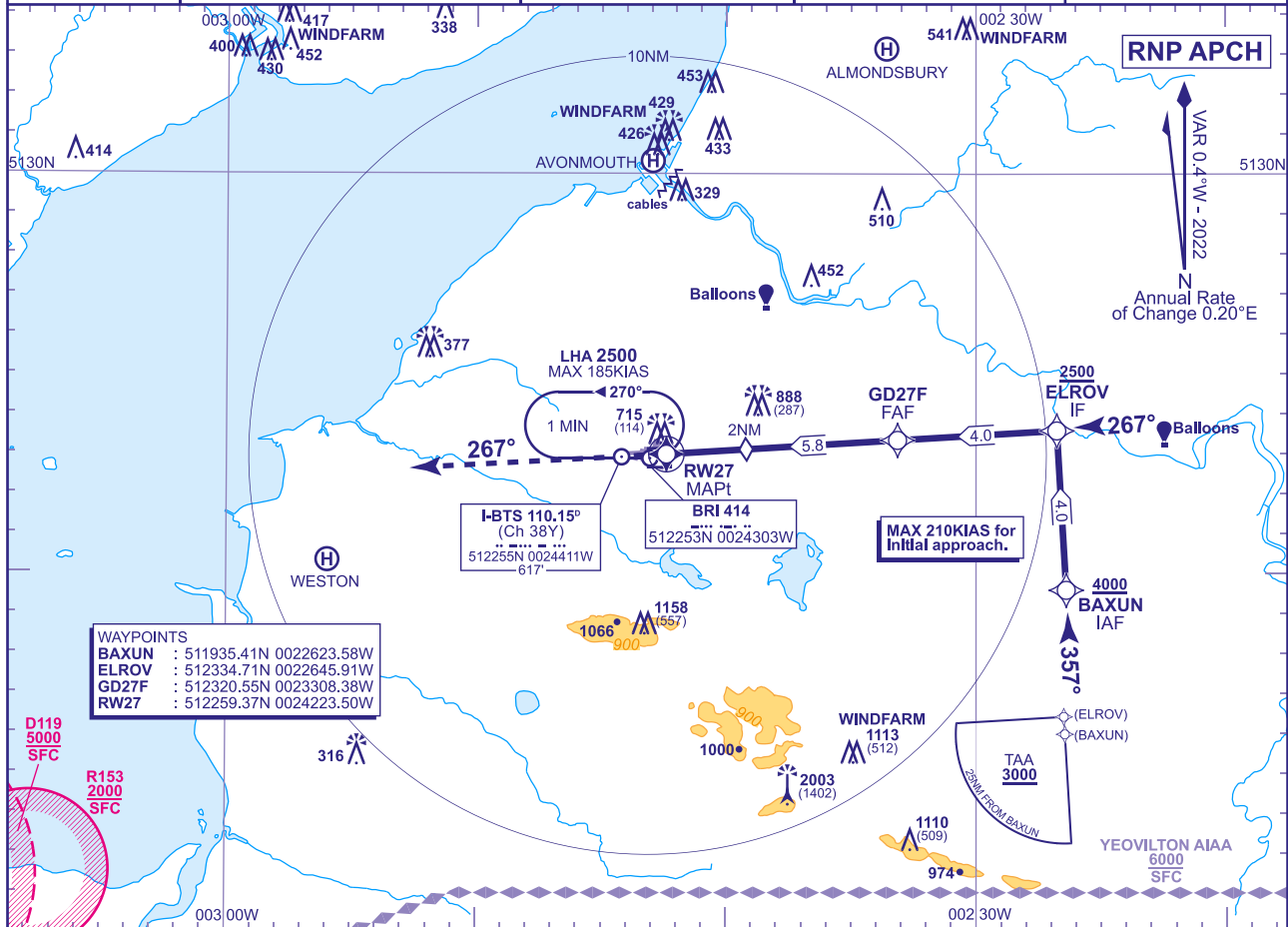


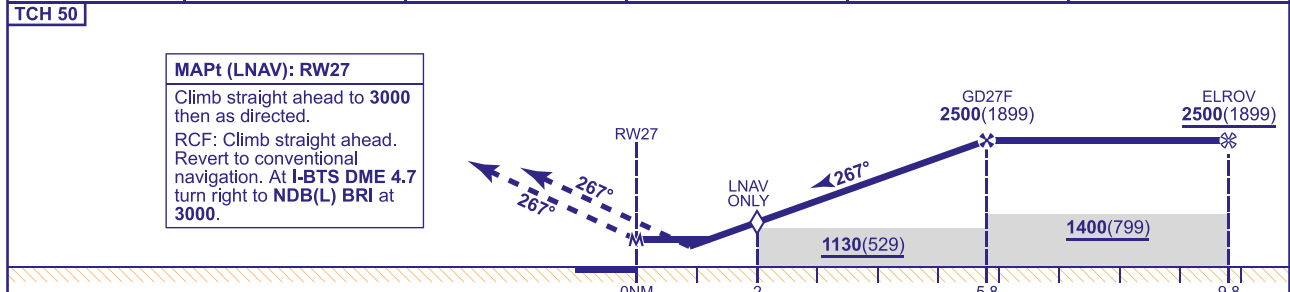
INSTRUMENT APPROACH CHART - ICAO

BRISTOL RNP RWY 27 (ACFT CAT A,B,C,D)

<div><div>30</div><div>MSA 25NM ARP</div></div>	TWR 133.850, 136.080*	BRISTOL TOWER	AD ELEVATION 622
	APP 125.650, 136.080*	BRISTOL RADAR	THR ELEVATION 601
	RAD 136.080*	BRISTOL DIRECTOR	OBSTACLE ELEVATION 2003 AMSL (1402) (ABOVE THR)
	ATIS 126.030	BRISTOL INFORMATION	BEARINGS ARE MAGNETIC
	*See AD 2.18 for details.		MIN TEMP -10°C TRANSITION ALTITUDE 6000



RECOMMENDED PROFILE VNAV - VERTICAL PATH ANGLE 3.0°, 318FT/NM, LNAV - Gradient 5.24%, 318FT/NM				
NM to RW27	5	4	3	2 (LNAV SDF)
ALT(HGT)	2250(1649)	1930(1329)	1610(1009)	1290(689)



Aircraft Category		A	B	C	D	Rate of descent	G/S KT	160	140	120	100	80
OCA (OCH)	LNAV/VNAV	950(349)	950(349)	950(349)	950(349)		FT/MIN	850	740	640	530	420
	LNAV	1000(399)	1000(399)	1000(399)	1000(399)							
VM(C)OCA (OCH AAL)	Total Area	1050(428)	1190(568)	1460(838)	1560(938)							
	North of RWY 09/27	1050(428)	1190(568)	1290(668)	1320(698)							

NOTES 1 Pilots should 'Request RNP Approach' on first contact with Bristol Radar.